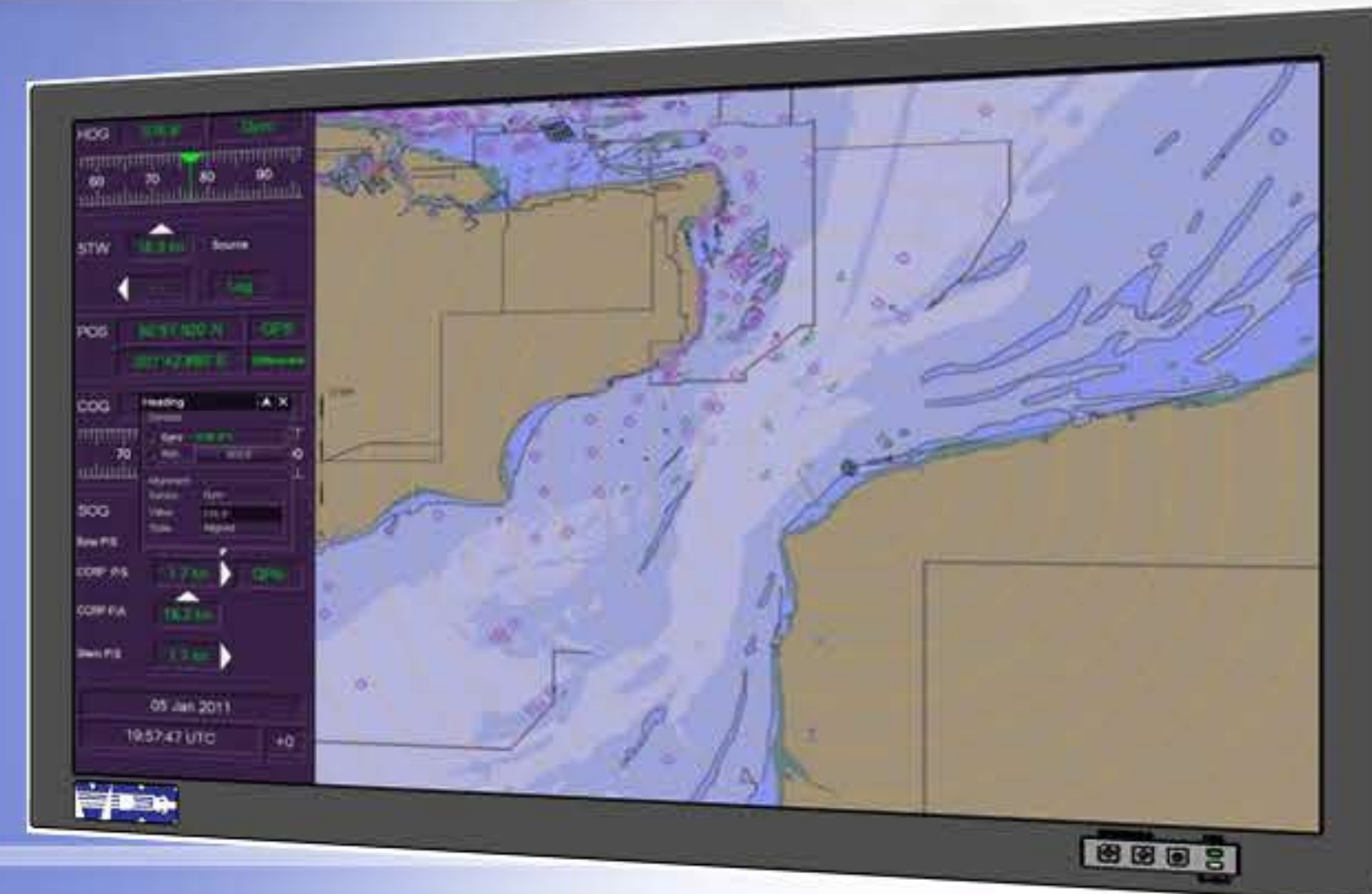




VIDEODISPLAY.COM | INFO@VIDEODISPLAY.COM

# VND-2401-CDS

RUGGED 24" Naval Display with Resistive Touch Panel



## SPECIFICATIONS

<b>Display Type</b>	24" Color TFT Active Matrix LCD
<b>Native Resolution</b>	1920 x 1200
<b>Viewing Angle</b>	+/- 80° All Directons
<b>Display Colors</b>	16.7 Million
<b>Active Area</b>	518.4(H) x 324.0(V) mm 20.41(H) x 12.76(V) inches
<b>Pixel Pitch</b>	0.270(H) x 0.270(V) mm
<b>Luminance</b>	400 cd/m <sup>2</sup> Typical w/ LED Backlights, Dims to Zero
<b>Contrast Ratio</b>	1000:1 Typical
<b>Response Time</b>	14 ms Typical
<b>Front Controls</b>	Brightness, Power
<b>Synchronization Range Horizontal/Vertical</b>	31.5~80.0 kHz / 60 Hz, 75 Hz
<b>Video Input</b>	DVI-D
<b>Power</b>	Voltage: 115~230 VAC Power: <100 Watts Typical 60 Hz +/- 3% Chassis Connector: D/MS3102R-10SL-3P or equivalent Mate: MS3106R10SL-3P or equivalent (not supplied)

## ENVIRONMENTAL

<b>Temperature</b>	Operating: 0°C to 50°C MIL-STD-810G, Method 502/501 Proc II Storage: -25°C to 70°C MIL-STD-810G, Method 502/501 Proc I
<b>Humidity</b>	Operating/Storage: 5% to 95% RH Non-condensing MIL-STD-810G, Method 507
<b>Altitude</b>	Operating: 0 to 20,000 ft ASL Storage: 0 to 45,000 ft ASL MIL-STD-810G, Method 500
<b>Shock</b>	MIL-DTL-901E, Grade A, Class I, Type B
<b>Vibration</b>	MIL-STD-167-1A, Type I
<b>Drip Proof</b>	MIL-STD-810G, Method 506 Proc II All Over
<b>Fungus</b>	MIL-STD-810G, Method 508
<b>EMI</b>	MIL-STD-461F, RE101, RE102, RS101, RS103
<b>Physicals</b>	Height: 14.75 inches Width: 22.05 inches Depth: 3.04 inches Weight: 22 pounds
<b>Mounting</b>	Console/Bulkhead

<b>Options</b>	Non-Touch Bulkhead Mounting VESA Mounting EMI: CE102, CS101, CS114, CS116 VGA Input (HD15F)
----------------	---

